



O TEN

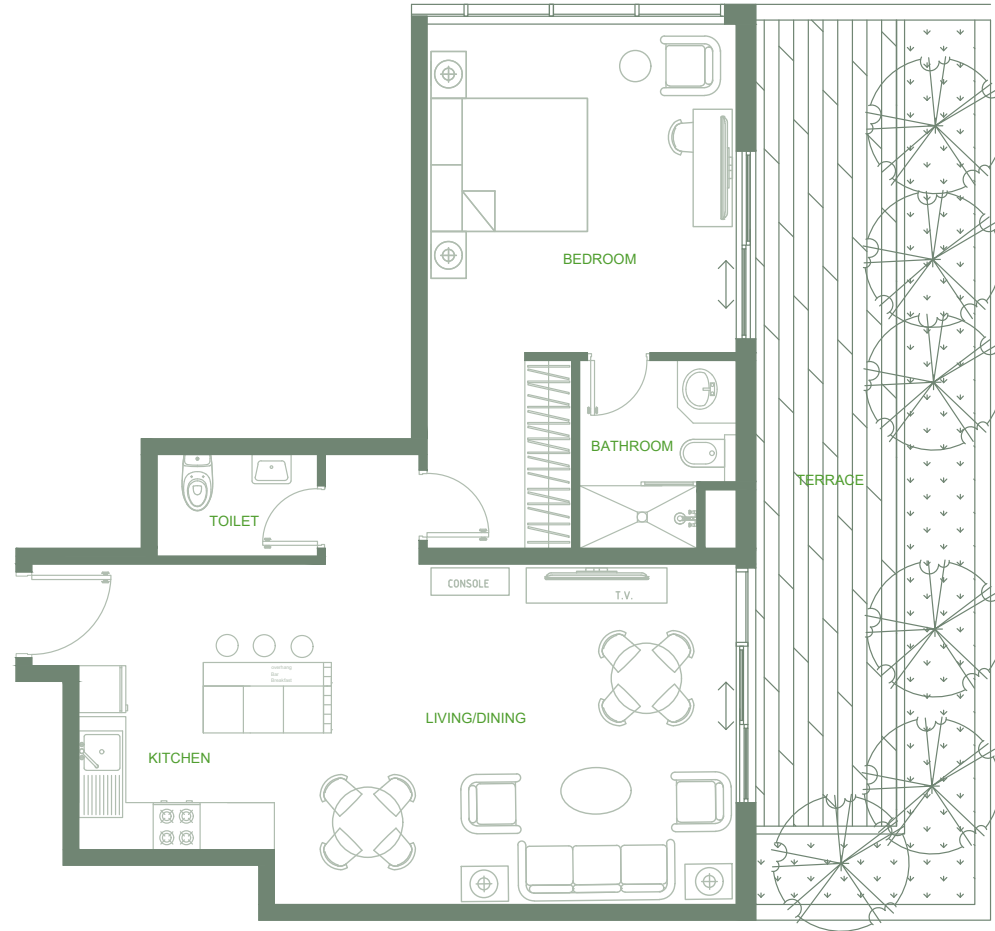
Floor Plan

1st *Floor*

O Ten Floor Plan 1st floor

◆ *Series 01*

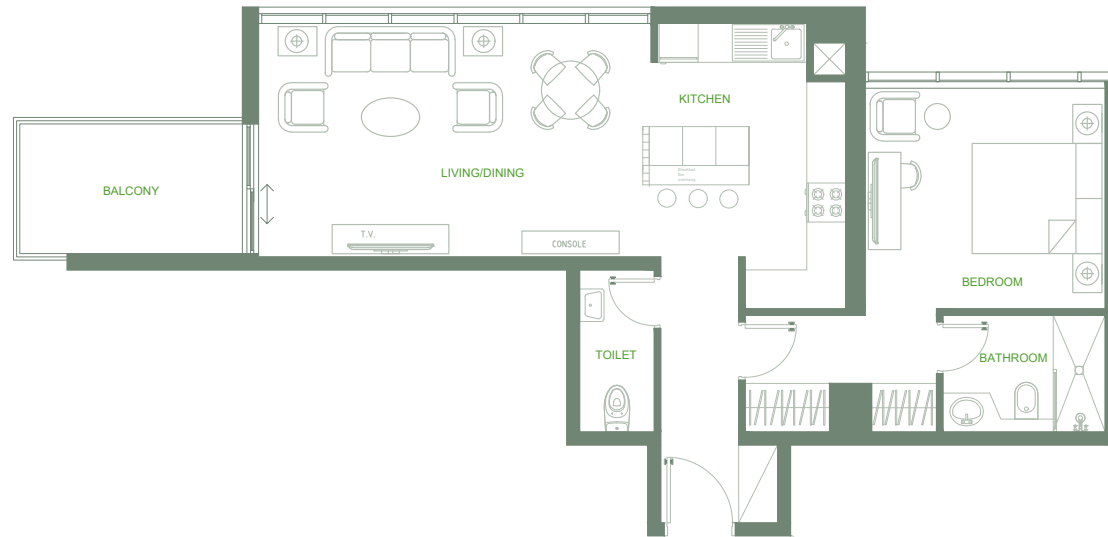
1 Bedroom
Total Area: 1,042 sq.ft.
Pool View



O Ten Floor Plan 1st floor

◆ *Series 02*

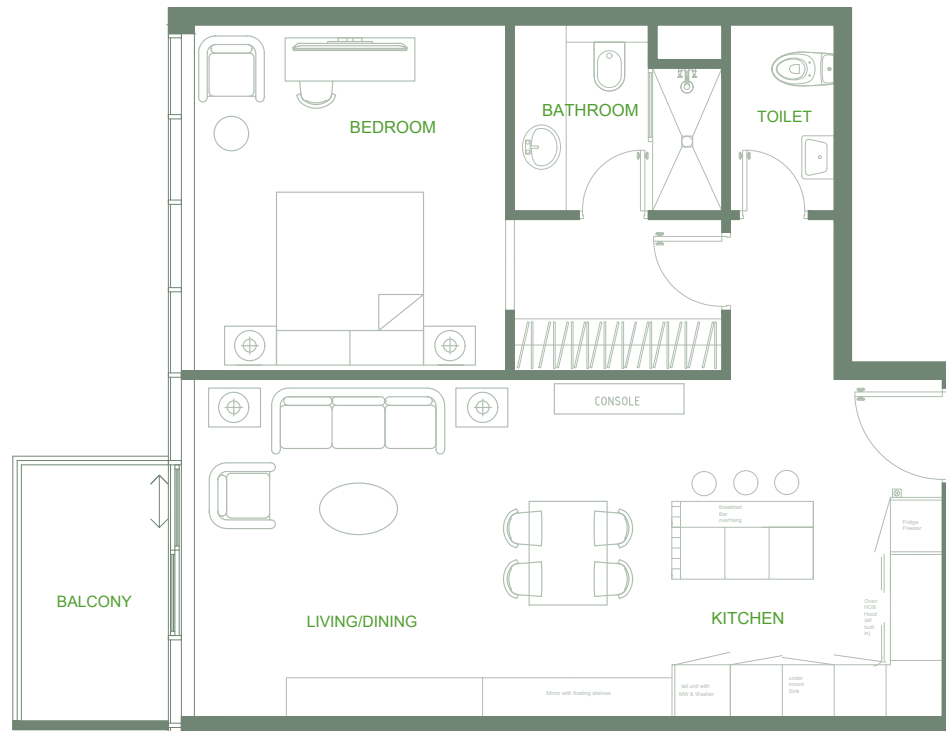
1 Bedroom
Total Area: 851 sq.ft.
Skyline View



O Ten Floor Plan 1st floor

◆ *Series 03*

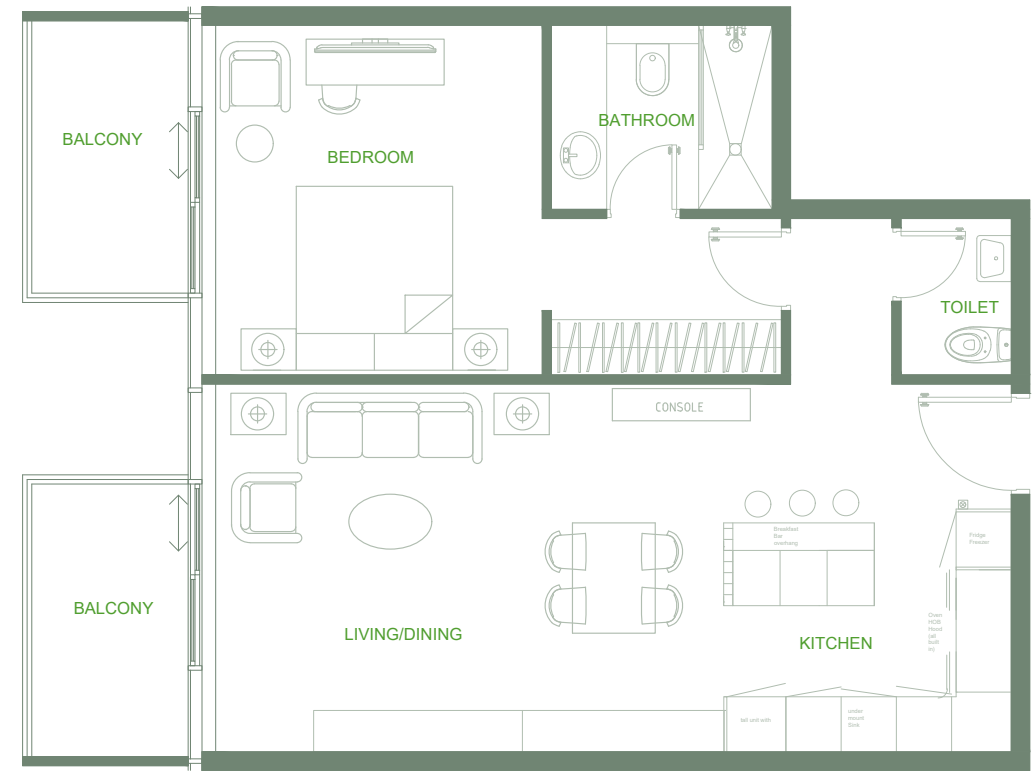
1 Bedroom
Total Area: 790 sq.ft.
Skyline View



O Ten Floor Plan 1st floor

◆ Series 04

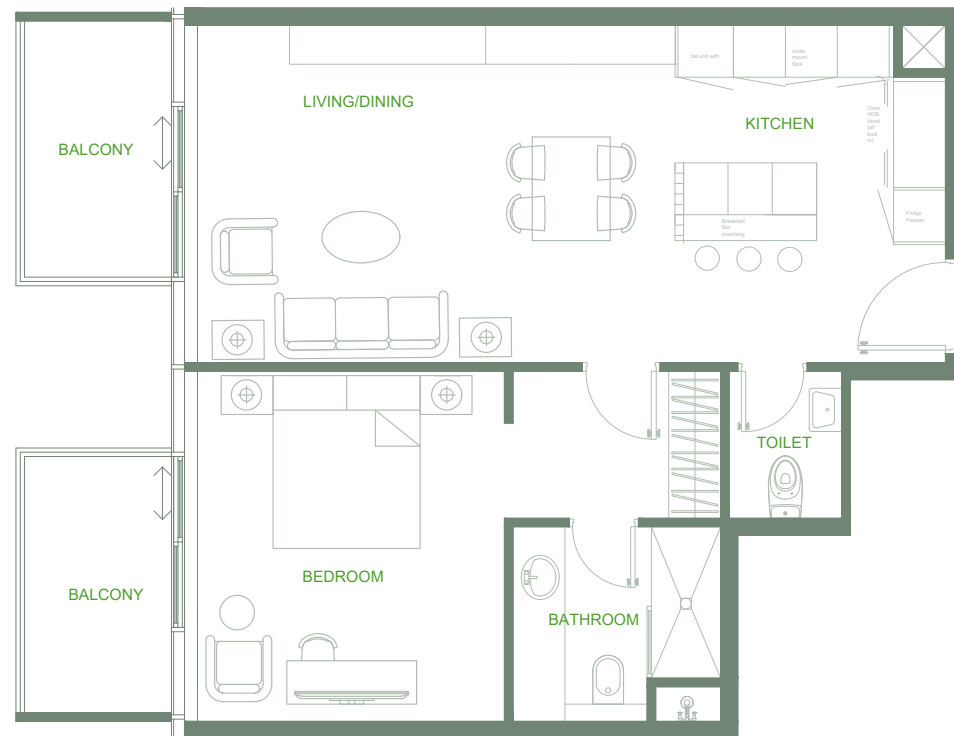
1 Bedroom
Total Area: 839 sq.ft.
Skyline View



O Ten Floor Plan 1st floor

◆ *Series 05*

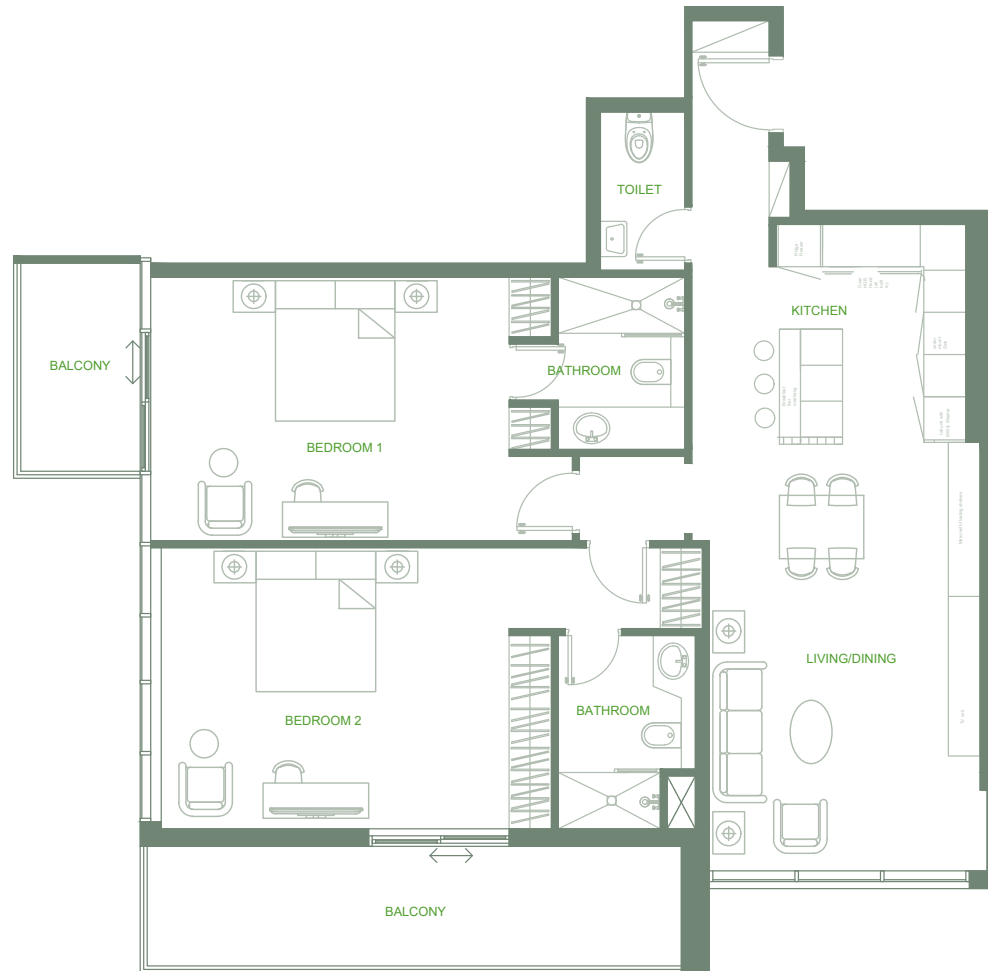
1 Bedroom
Total Area: 819 sq.ft.
Skyline View



O Ten Floor Plan 1st floor

◆ *Series 06*

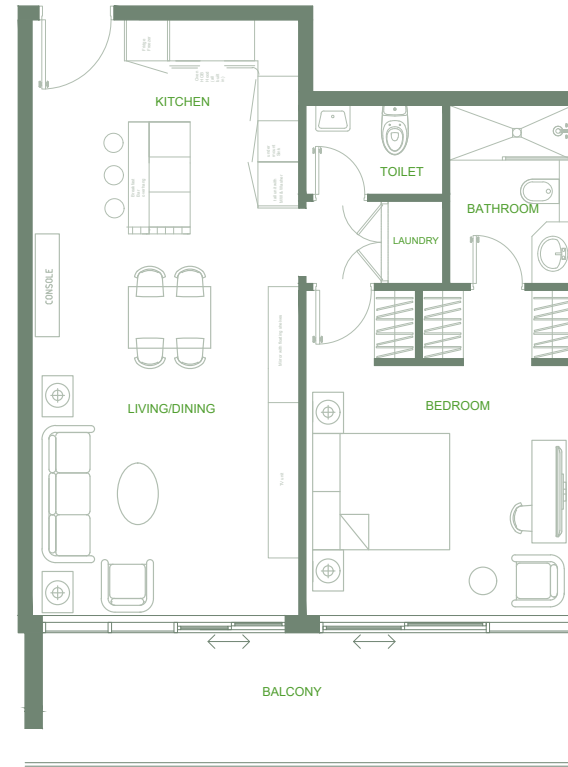
2 Bedrooms
Total Area: 1,389 sq.ft.
Skyline View



O Ten Floor Plan 1st floor

◆ *Series 07*

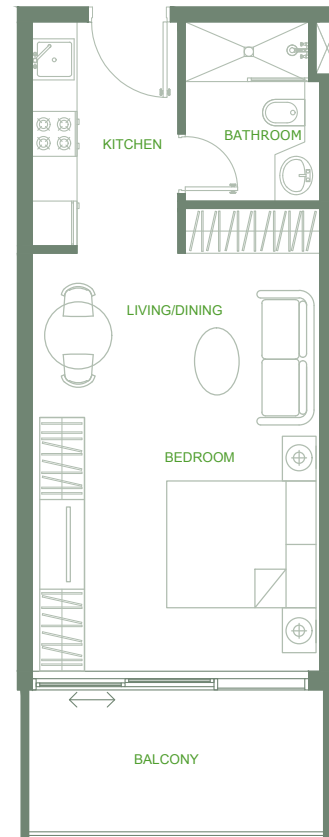
1 Bedroom
Total Area: 931 sq.ft.
Skyline View



O Ten Floor Plan 1st floor

◆ *Series 08*

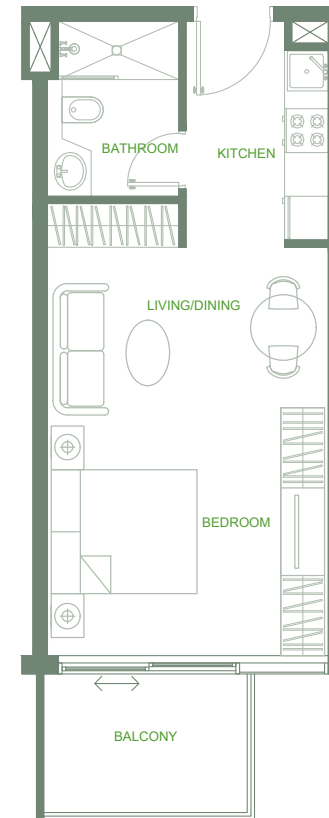
Studio
Total Area: 476 sq.ft.
Skyline View



O Ten Floor Plan 1st floor

◆ *Series 09*

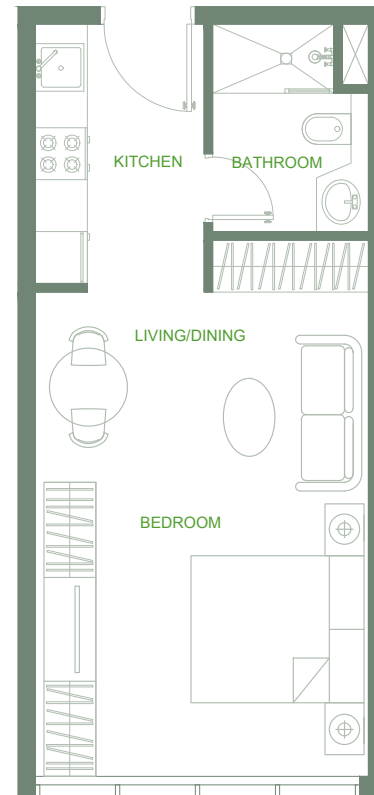
Studio
Total Area: 447 sq.ft.
Skyline View



O Ten Floor Plan 1st floor

◆ *Series 10*

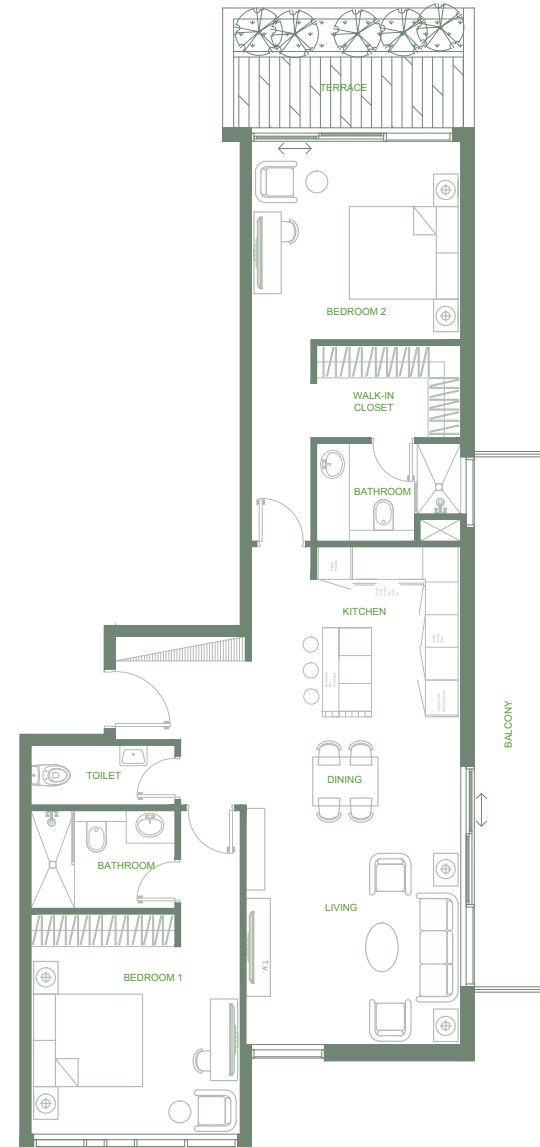
Studio
Total Area: 385 sq.ft.
Skyline View



O Ten Floor Plan 1st floor

◆ *Series 11*

2 Bedrooms
Total Area: 1,278 sq.ft.
Street View

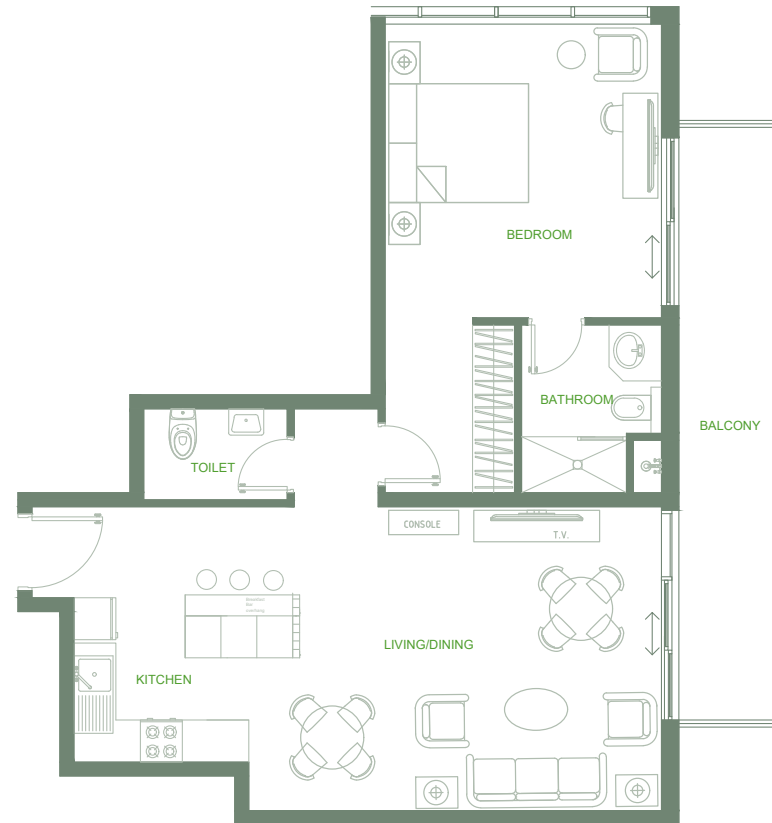


2nd - 7th *Floor*

O Ten Floor Plan 2nd - 7th floor

◆ *Series 01*

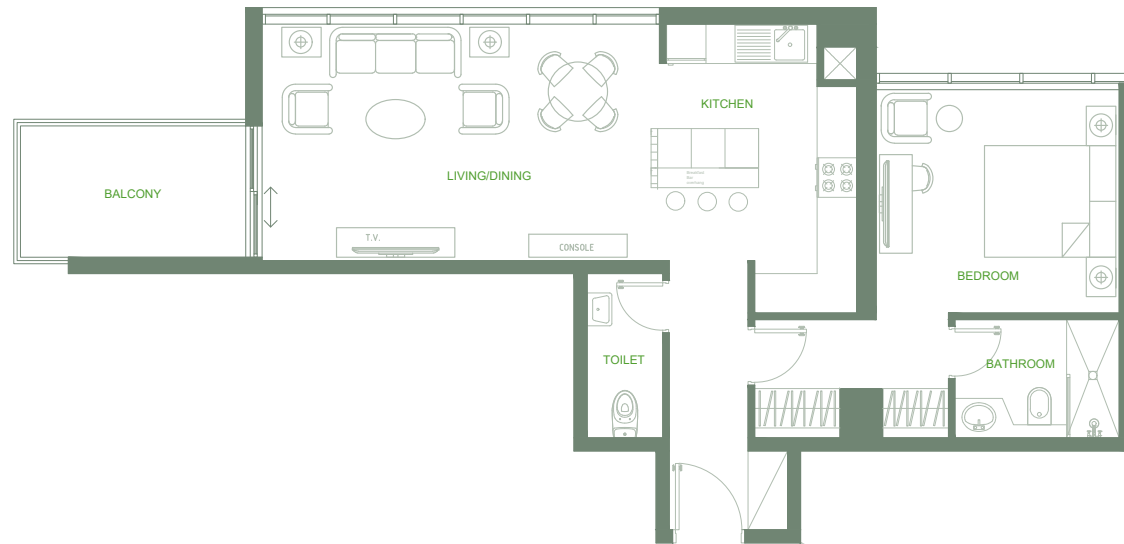
1 Bedroom
Total Area: 942 sq.ft.
Pool View



O Ten Floor Plan 2nd - 7th floor

◆ *Series 02*

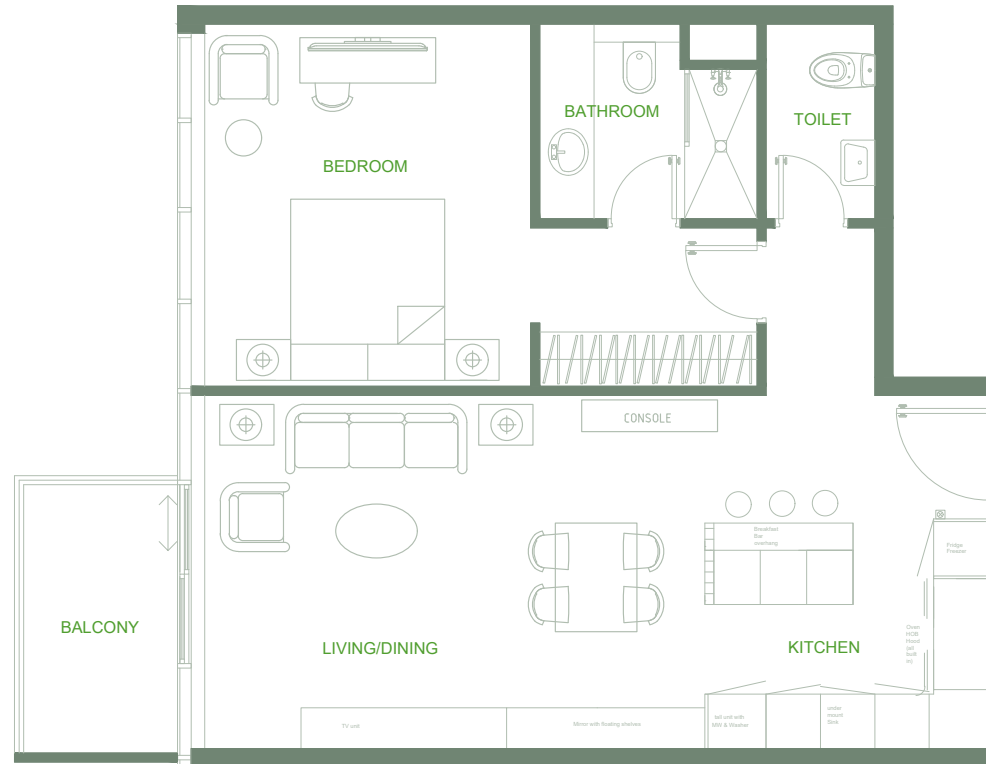
1 Bedroom
Total Area: 855 sq.ft.
Skyline View



O Ten Floor Plan 2nd - 7th floor

◆ *Series 03*

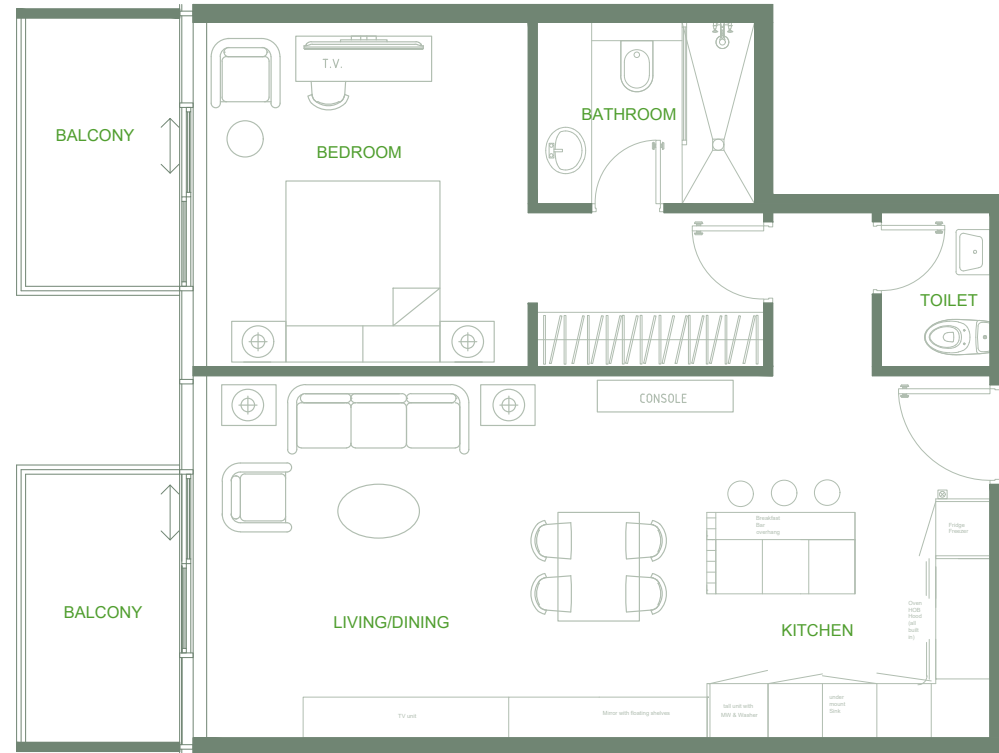
1 Bedroom
Total Area: 790 sq.ft.
Skyline View



O Ten Floor Plan 2nd - 7th floor

◆ Series 04

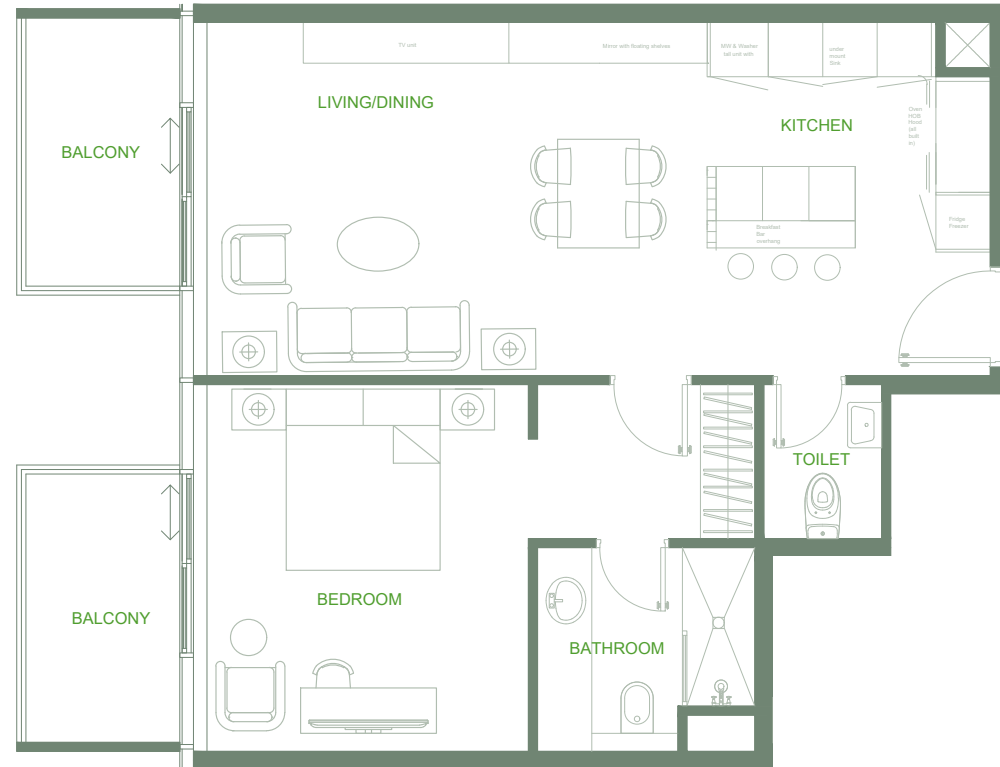
1 Bedroom
Total Area: 839 sq.ft.
Skyline View



O Ten Floor Plan 2nd - 7th floor

◆ *Series 05*

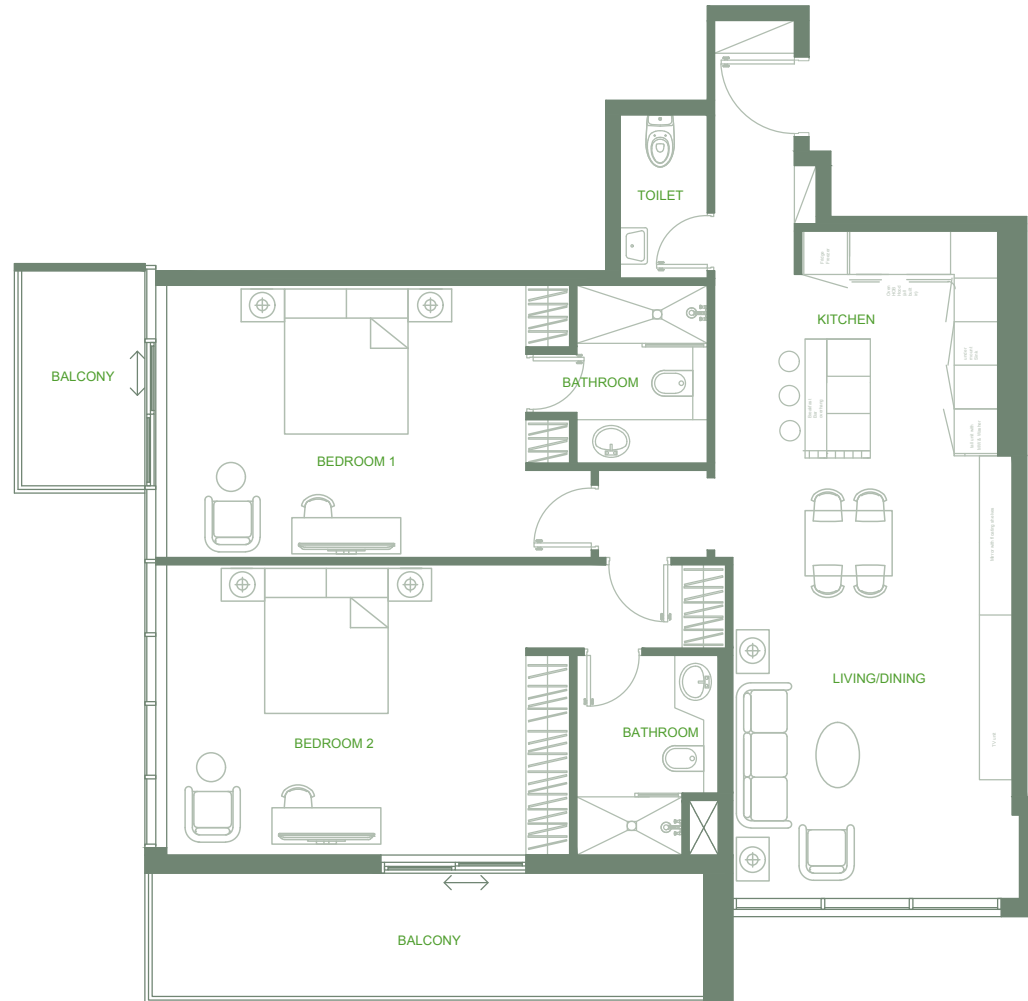
1 Bedroom
Total Area: 819 sq.ft.
Skyline View



O Ten Floor Plan 2nd - 7th floor

◆ *Series 06*

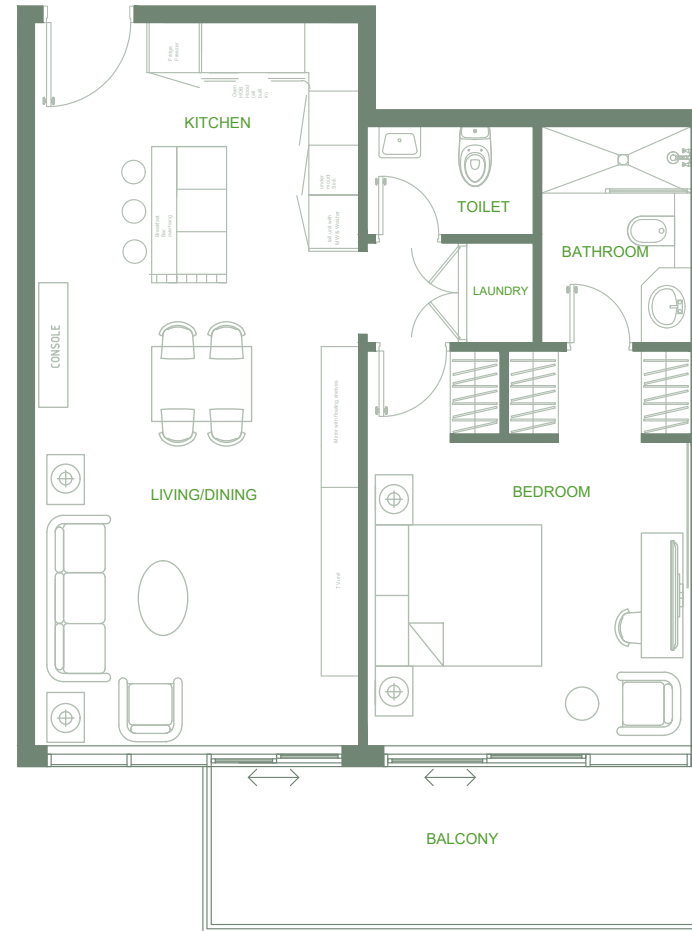
2 Bedrooms
Total Area: 1,389 sq.ft.
Skyline View



O Ten Floor Plan 2nd - 7th floor

◆ *Series 07*

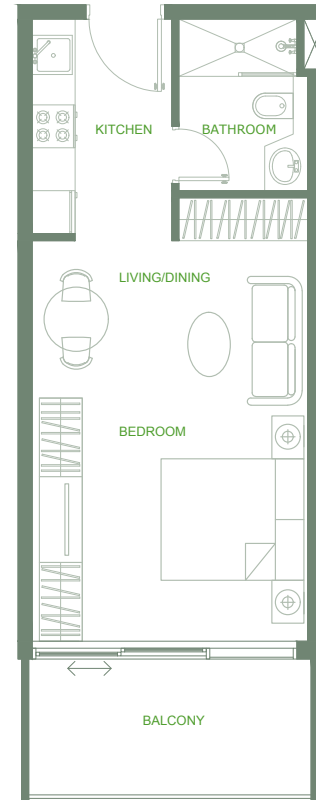
1 Bedroom
Total Area: 854 sq.ft.
Skyline View



O Ten Floor Plan 2nd - 7th floor

◆ *Series 08*

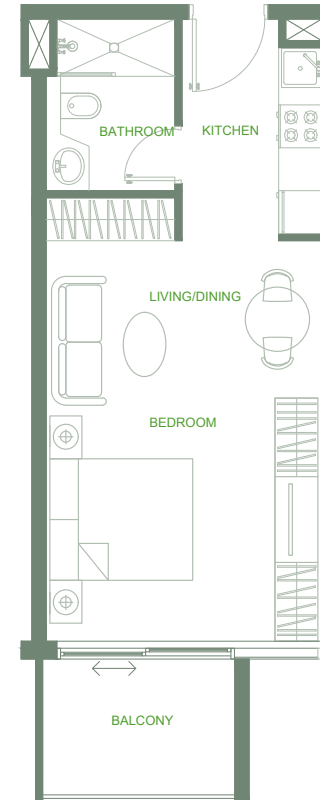
Studio
Total Area: 476 sq.ft.
Skyline View



O Ten Floor Plan 2nd - 7th floor

◆ *Series 09*

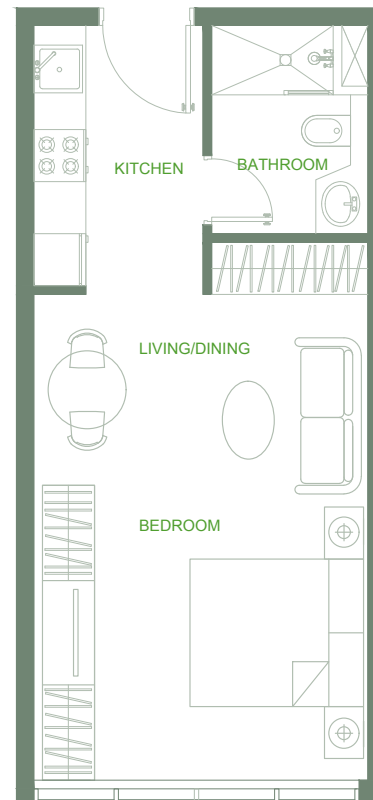
Studio
Total Area: 447sq.ft.
Skyline View



O Ten Floor Plan 2nd - 7th floor

◆ *Series 10*

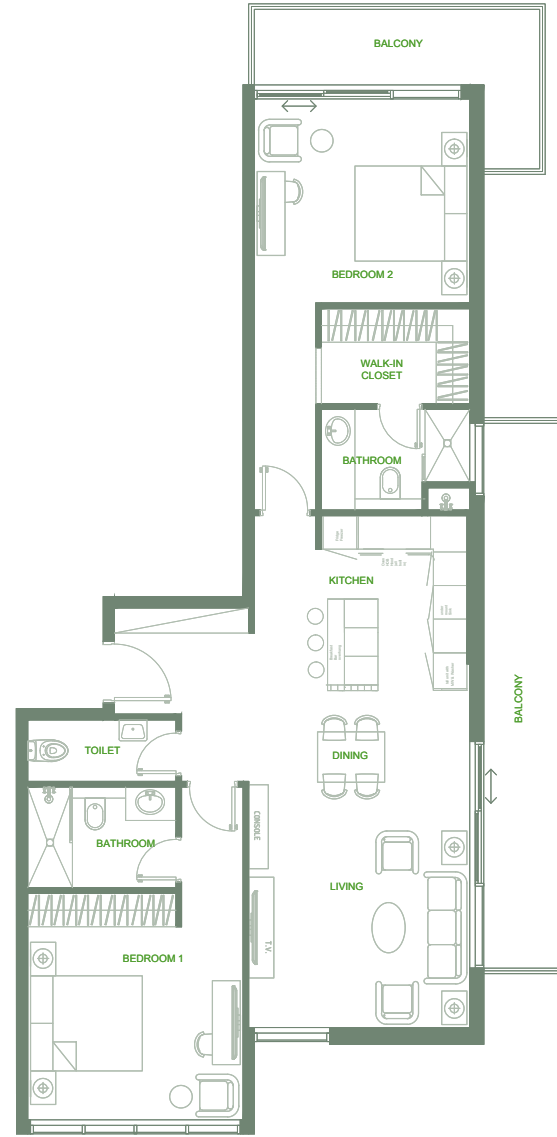
Studio
Total Area: 385 sq.ft.
Skyline View



O Ten Floor Plan 2nd - 7th floor

◆ *Series 11*

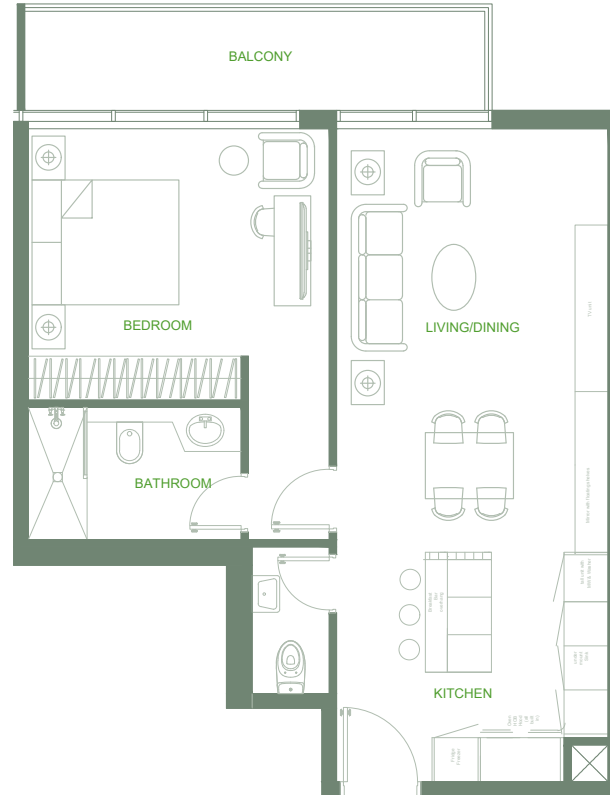
2 Bedrooms
Total Area: 1,379 sq.ft.
Street View



O Ten Floor Plan 2nd - 7th floor

◆ *Series 12*

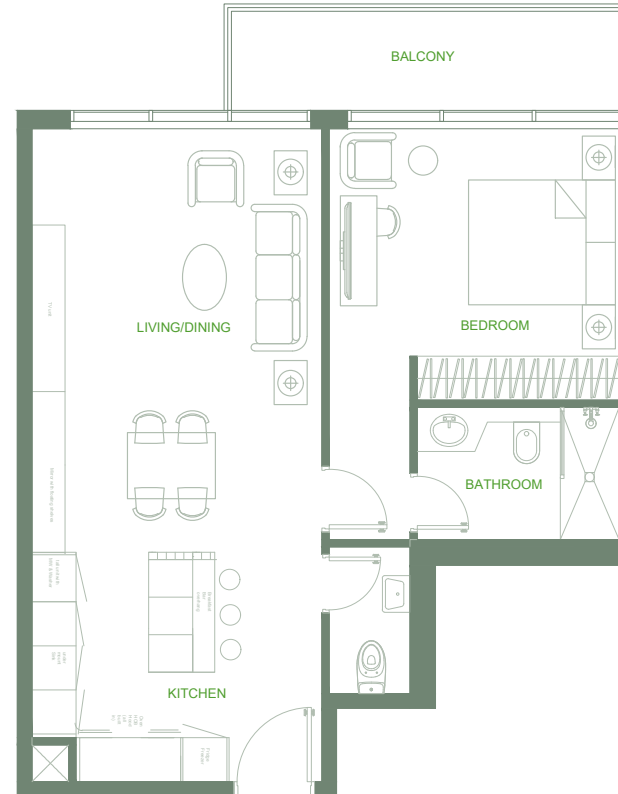
1 Bedroom
Total Area : 774 sq.ft.
Pool View



O Ten Floor Plan 2nd - 7th floor

♦ *Series 13*

1 Bedroom
Total Area: 775 sq.ft.
Pool View

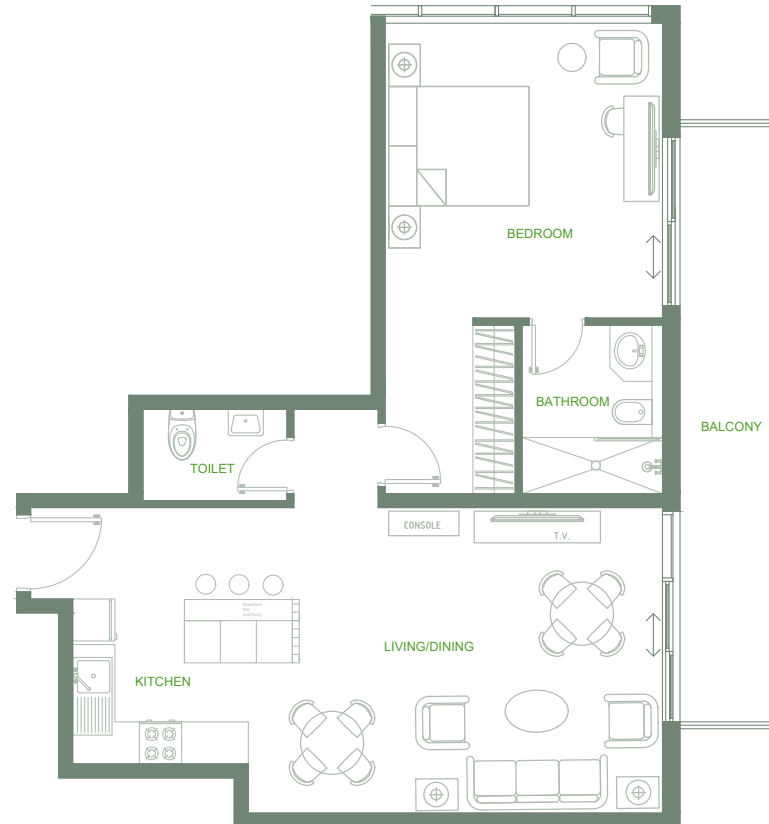


8th *Floor*

O Ten Floor Plan 8th floor

◆ *Series 01*

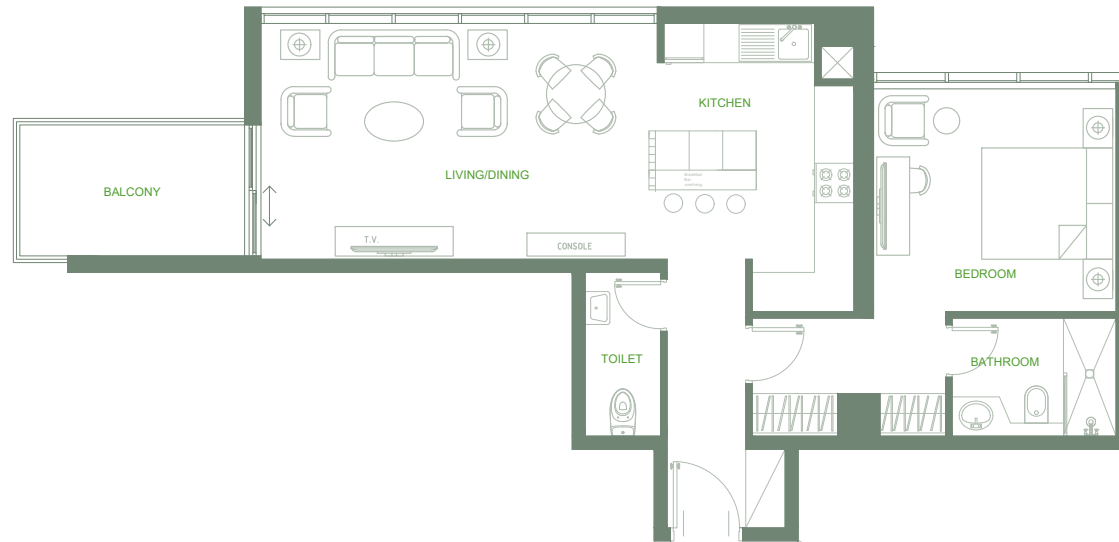
1 Bedroom
Total Area: 942 sq.ft.
Pool View



O Ten Floor Plan 8th floor

◆ *Series 02*

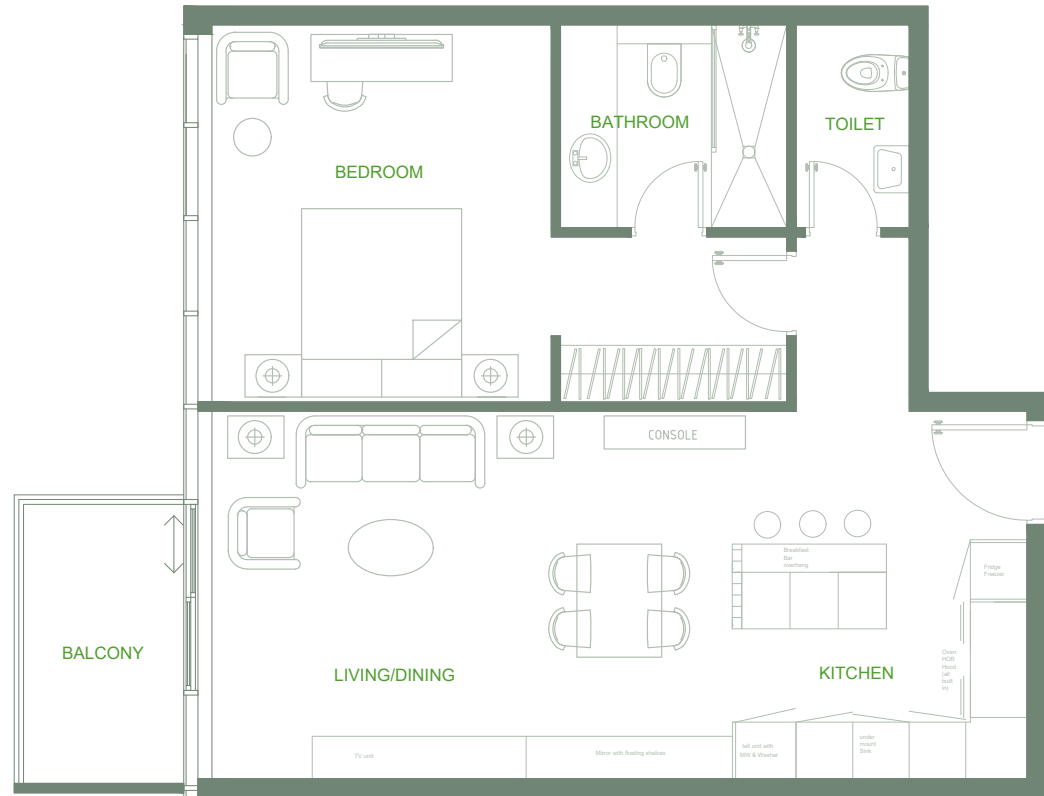
1 Bedroom
Total Area: 853 sq.ft.
Skyline View



O Ten Floor Plan 8th floor

◆ *Series 03*

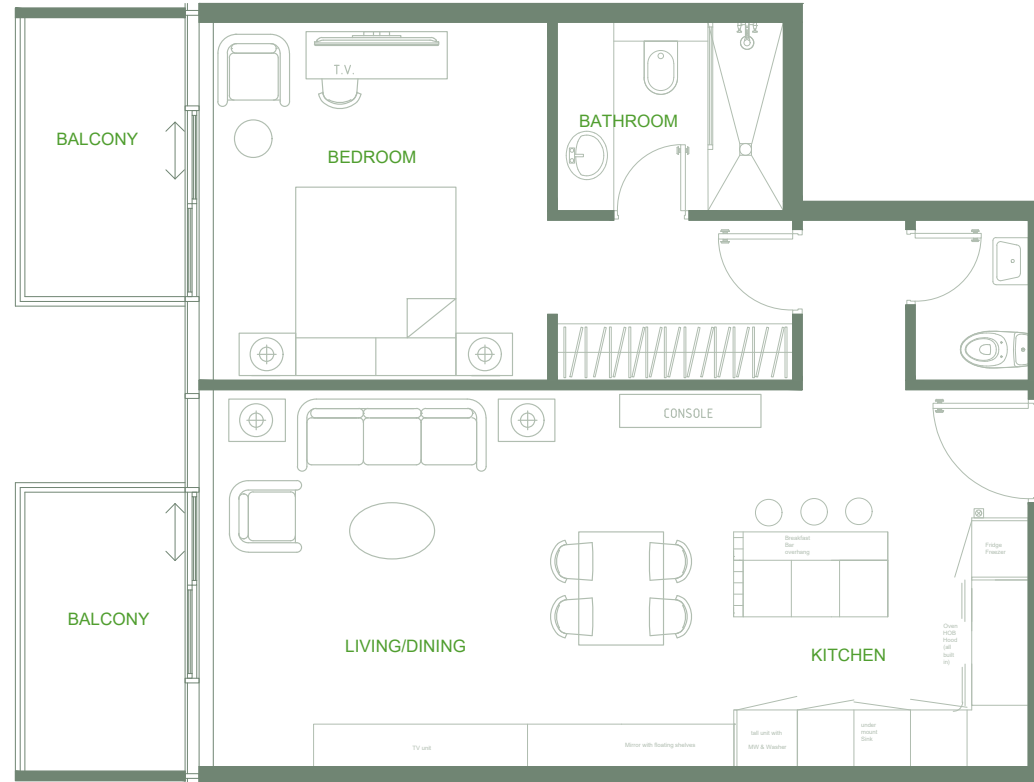
1 Bedroom
Total Area: 792 sq.ft.
Skyline View



O Ten Floor Plan 8th floor

◆ *Series 04*

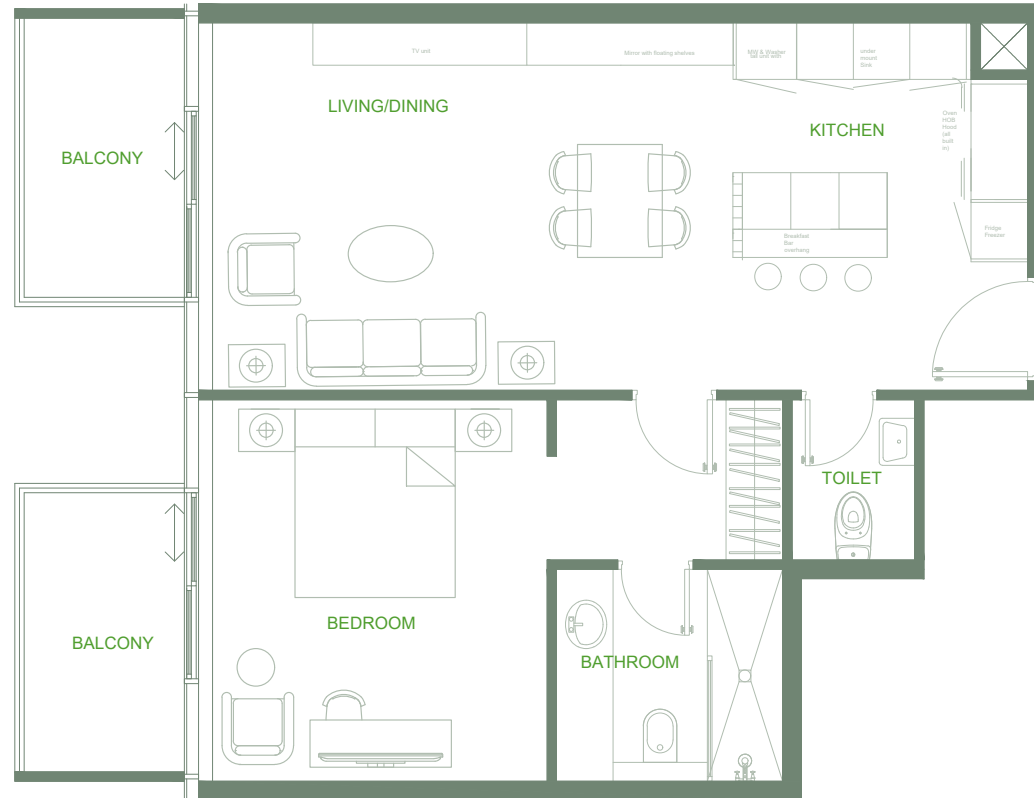
1 Bedroom
Total Area: 840 sq.ft.
Skyline View



O Ten Floor Plan 8th floor

◆ *Series 05*

1 Bedroom
Total Area: 819 sq.ft.
Skyline View



O Ten Floor Plan 8th floor

◆ *Series 06*

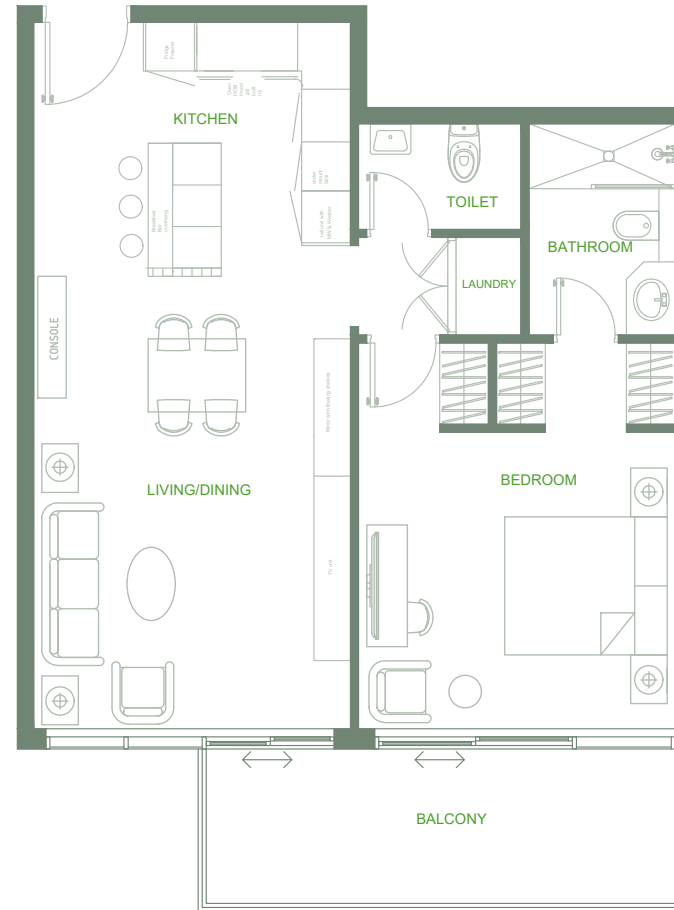
2 Bedrooms
Total Area: 1,389 sq.ft.
Skyline View



O Ten Floor Plan 8th floor

◆ *Series 07*

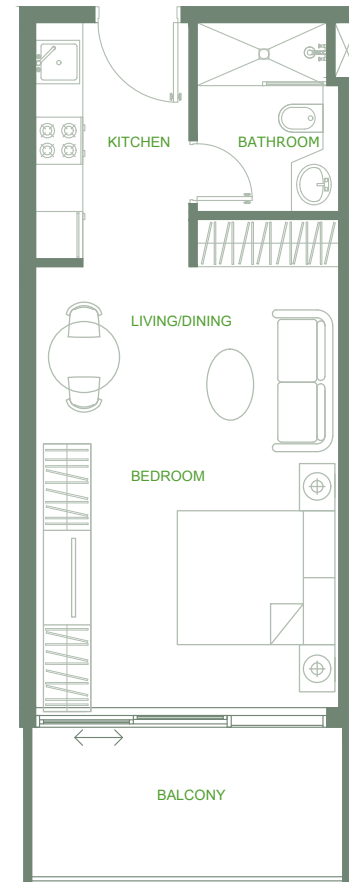
1 Bedroom
Total Area: 854 sq.ft.
Skyline View



O Ten Floor Plan 8th floor

◆ *Series 08*

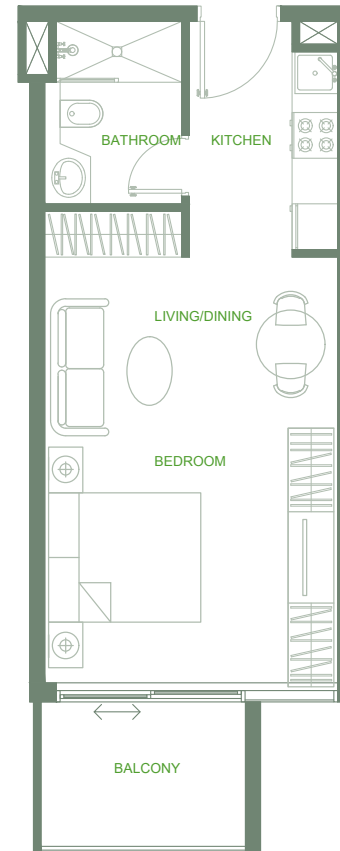
Studio
Total Area: 476 sq.ft.
Skyline View



O Ten Floor Plan 8th floor

◆ *Series 09*

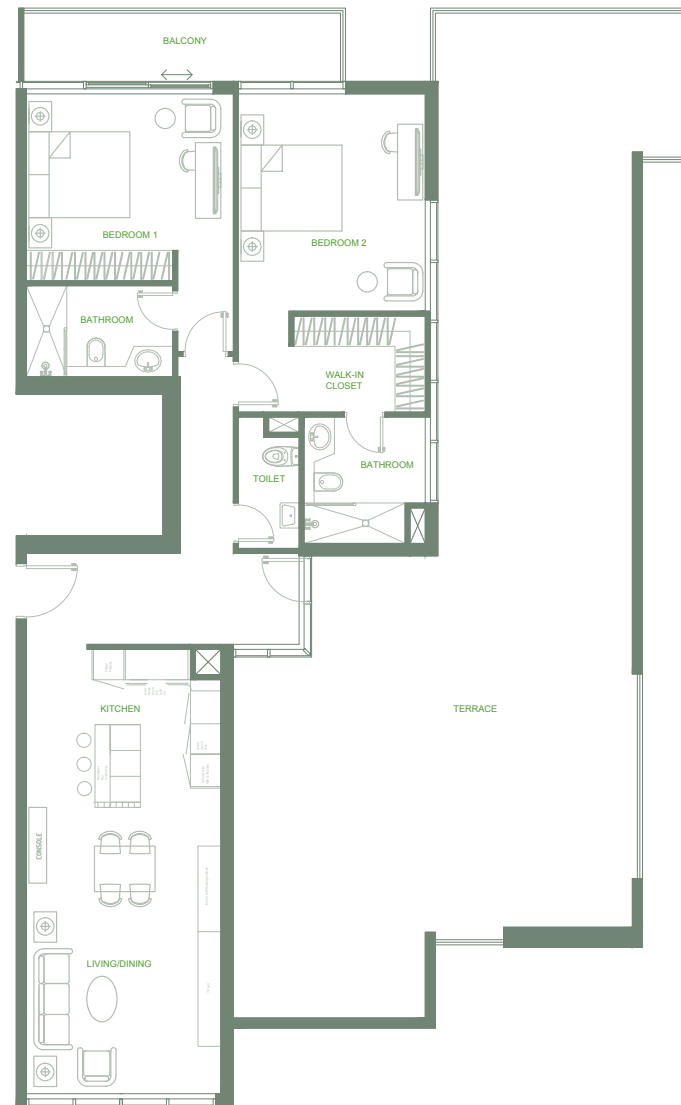
Studio
Total Area: 447 sq.ft.
Skyline View



O Ten Floor Plan 8th floor

◆ *Series 10*

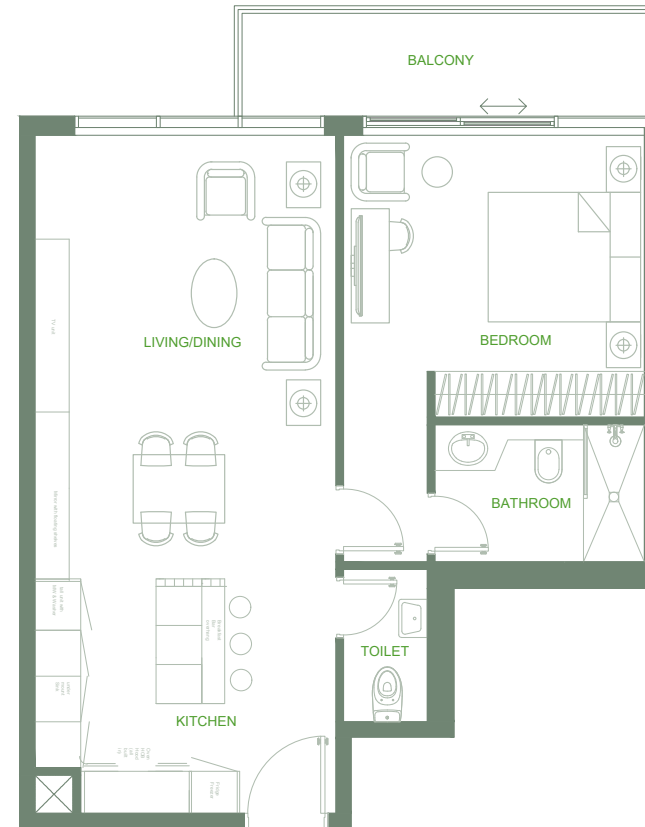
2 Bedrooms
Total Area: 2,517 sq.ft.
Street View



O Ten Floor Plan 8th floor

◆ *Series 11*

1 Bedroom
Total Area: 775 sq.ft.
Pool View

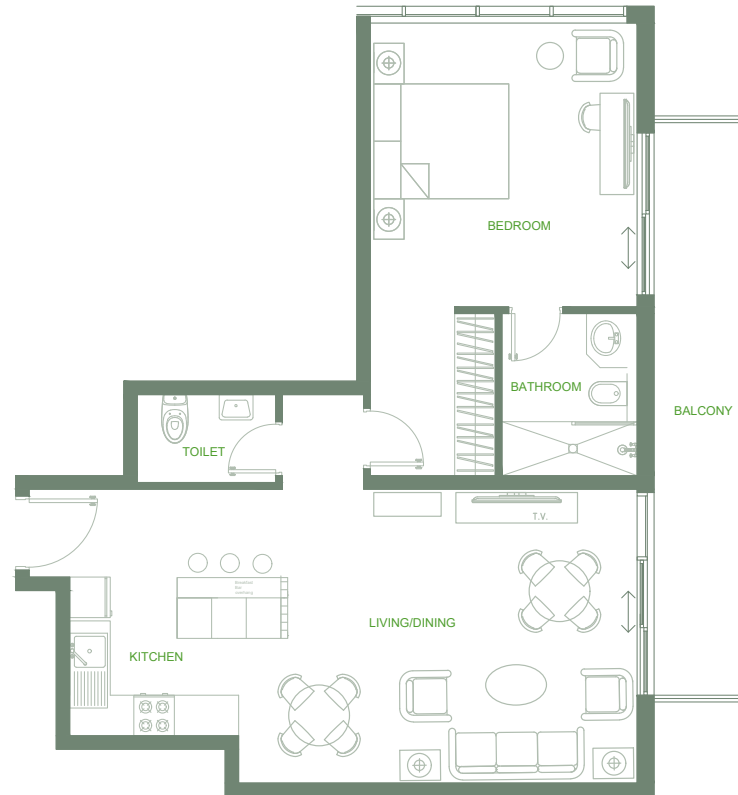


9th - 10th *Floor*

O Ten Floor Plan 9th - 10th floor

◆ *Series 01*

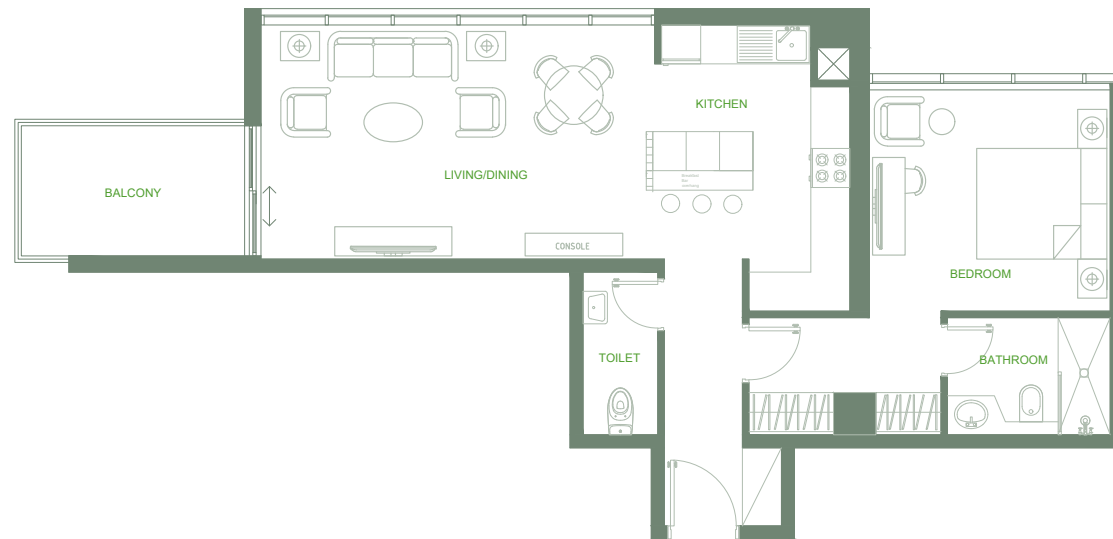
1 Bedroom
Total Area: 942 sq.ft.
Pool View



O Ten Floor Plan 9th - 10th floor

◆ *Series 02*

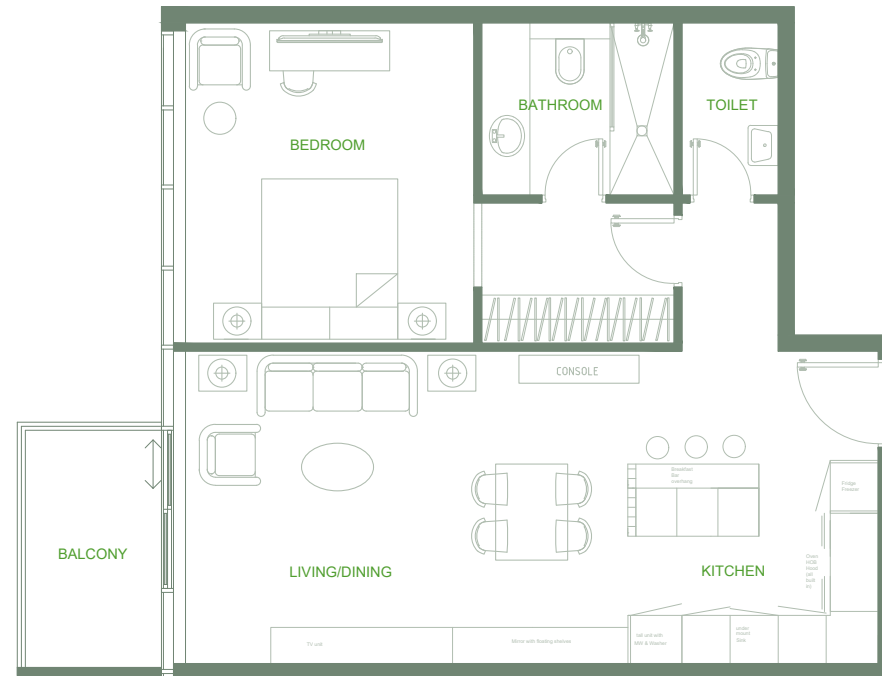
1 Bedroom
Total Area: 853 sq.ft.
Skyline View



O Ten Floor Plan 9th - 10th floor

◆ *Series 03*

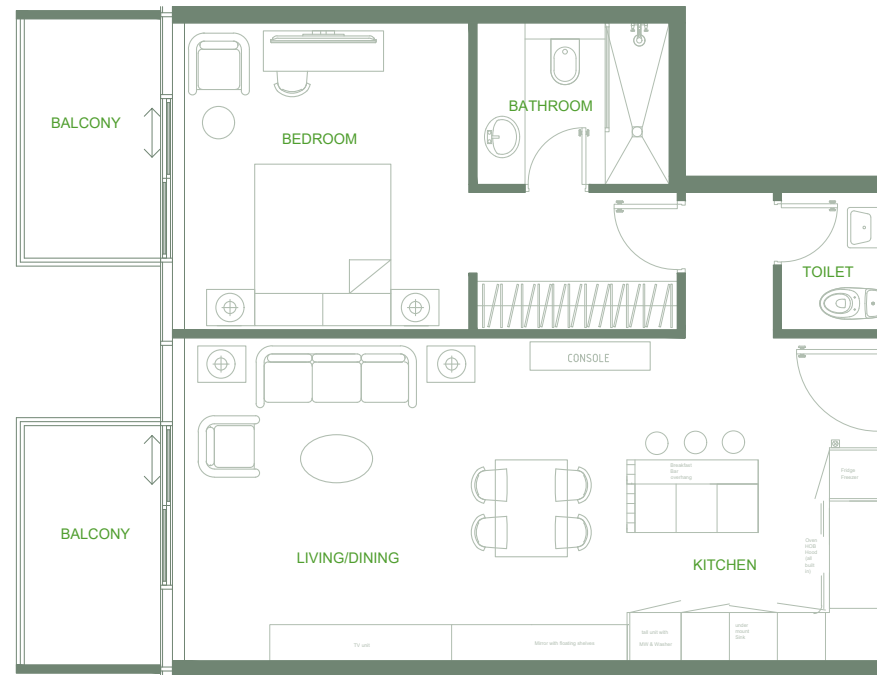
1 Bedroom
Total Area: 792 sq.ft.
Skyline View



O Ten Floor Plan 9th - 10th floor

◆ *Series 04*

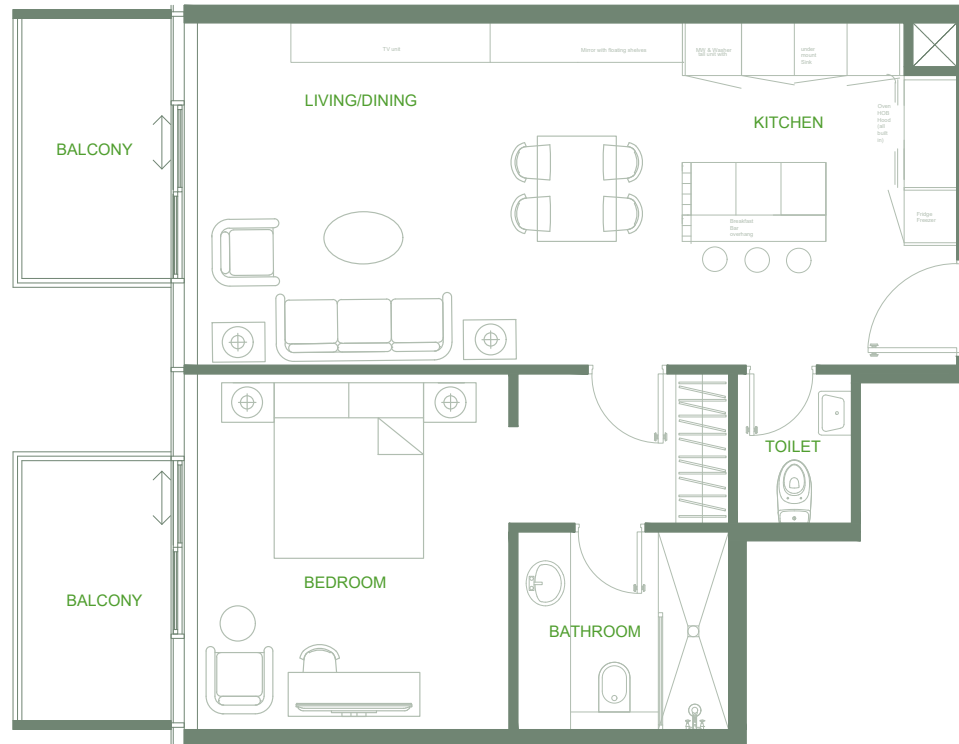
1 Bedroom
Total Area: 840 sq.ft.
Skyline View



O Ten Floor Plan 9th - 10th floor

◆ *Series 05*

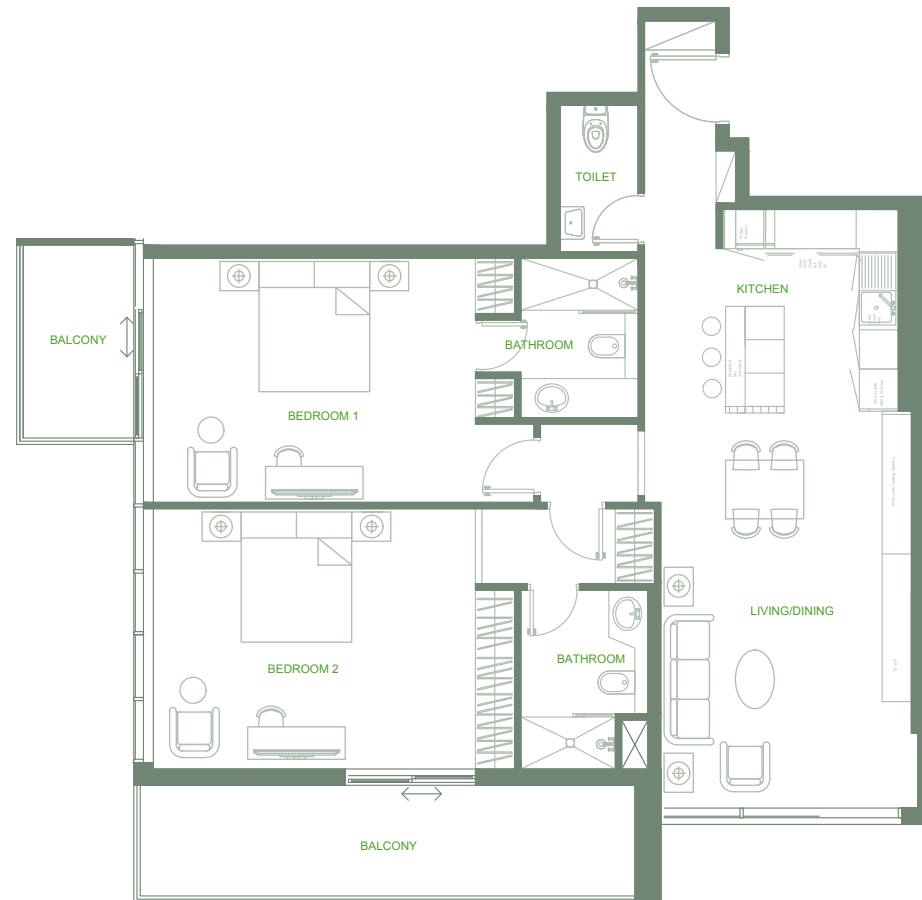
1 Bedroom
Total Area: 819 sq.ft.
Skyline View



O Ten Floor Plan 9th - 10th floor

◆ *Series 06*

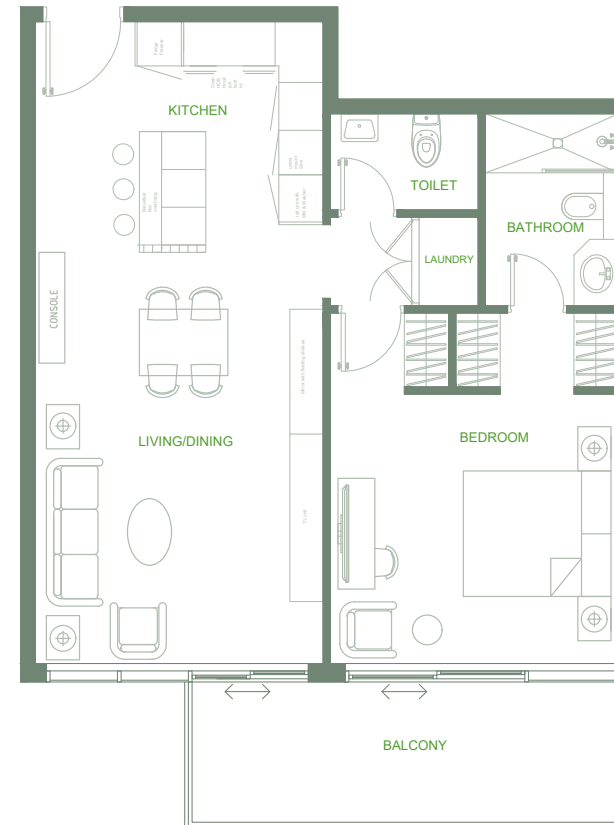
2 Bedrooms
Total Area: 1,389 sq.ft.
Skyline View



O Ten Floor Plan 9th - 10th floor

◆ *Series 07*

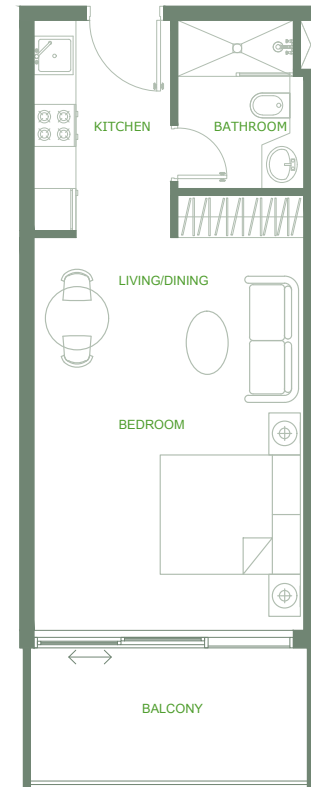
1 Bedroom
Total Area: 854 sq.ft.
Skyline View



O Ten Floor Plan 9th - 10th floor

◆ *Series 08*

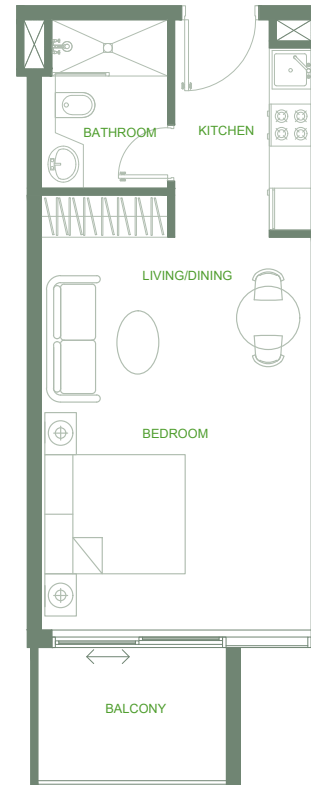
Studio
Total Area: 476 sq.ft.
Skyline View



O Ten Floor Plan 9th - 10th floor

◆ *Series 09*

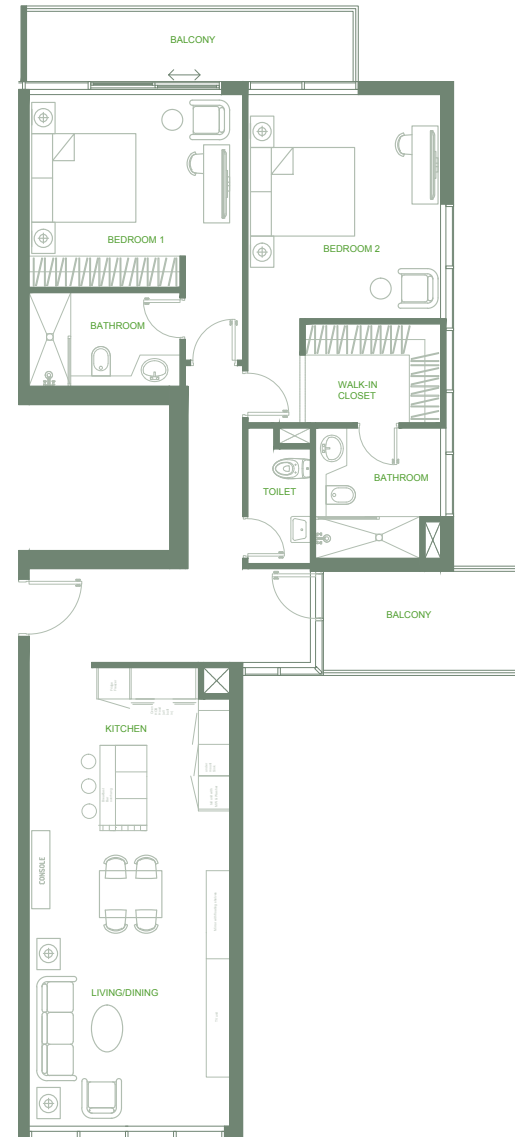
Studio
Total Area: 447 sq.ft.
Skyline View



O Ten Floor Plan 9th - 10th floor

◆ *Series 10*

2 Bedrooms
Total Area: 1,393 sq.ft.
Street View



O Ten Floor Plan 9th - 10th floor

♦ *Series 11*

1 Bedroom
Total Area: 775 sq.ft.
Pool View

